

# CT Exams CPT Codes

## HEAD AND SOFT TISSUE NECK

### BRAIN / HEAD

(wo)	70450
(w)	70460
(w/wo)	70470
CT Angio Head	70496

### FACIAL BONES / SINUSES / MAXILLOFACIAL

(wo)	70486
(w)	70487
(w/wo)	70488
(wo/limited)	70486-52

### PETROUS / TEMPORAL BONE (IAC)

(wo)	70480
------	-------

### SELLA (PITUITARY)

(w/wo)	70482
--------	-------

### NECK, SOFT TISSUE

(wo)	70490
(w)	70491
(w/wo)	70492

## SPINE

### CERVICAL

(wo)	72125
(w)	72126
(w/wo)	72127

### THORACIC

(wo)	72128
(w)	72129
(w/wo)	72130

### LUMBAR

(wo)	72131
(w)	72132
(w/wo)	72133

## EXTREMITY

### UPPER

(wo)	73200
(w)	73201
(w/wo)	73202

### LOWER

(wo)	73700
(w)	73701
(w/wo)	73702

## BODY IMAGING

### HEART

Calcium Score (CACS) (wo)	75571
Coronary CT Angiogram (CCTA) (w)	75574

### CHEST

(wo)	71250
(w)	71260
CT Angio Chest (w)	71275

### ABDOMEN

(wo)	74150
(w)	74160
(w/wo)	74170
CT Angio / AAA (w)	74175
CT Angio Aorta Runoff (w)	75635

### PELVIS

(wo)	72192
(w)	72193
(w/wo)	72194

### VIRTUAL COLONOSCOPY

Screening	74263
Diagnostic	74261

## COMBINATION STUDIES

### NECK, CHEST, ABDOMEN AND PELVIS

(w/wo)	70491, 71260 & 74178
--------	----------------------

### CHEST, ABDOMEN AND PELVIS

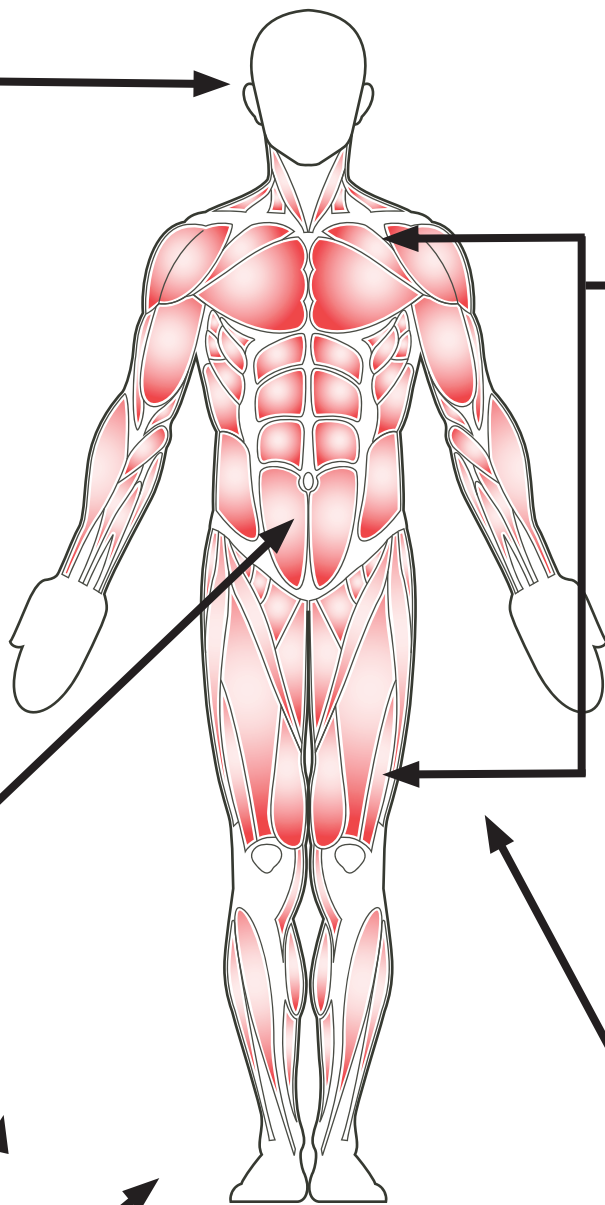
(wo)	71250 & 74176
(w/wo)	71260 & 74178

### CHEST AND ABDOMEN

(w/wo)	71260 & 74170
--------	---------------

### ABDOMEN AND PELVIS

(w)	74177
(w/wo)	74178
Renal Calculi (wo)	74176
CTIVP/Hematuria (w/wo)	74178
CT Enterography (w/wo)	74178
CT Angio Abdomen and Pelvis (w/wo)	74174



### ABBREVIATION KEY

- wo = without IV contrast
- w = with IV contrast
- w/wo = with & without IV contrast
- CACS = Coronary Artery Calcium Score
- CCTA = Coronary CT Angiogram

*These CPT codes represent the most commonly ordered CT exams under ARA protocols. For any coding inquiry not listed, please call your Provider Relations Associate at (512) 731-2254.*



# MRI Exams CPT Codes

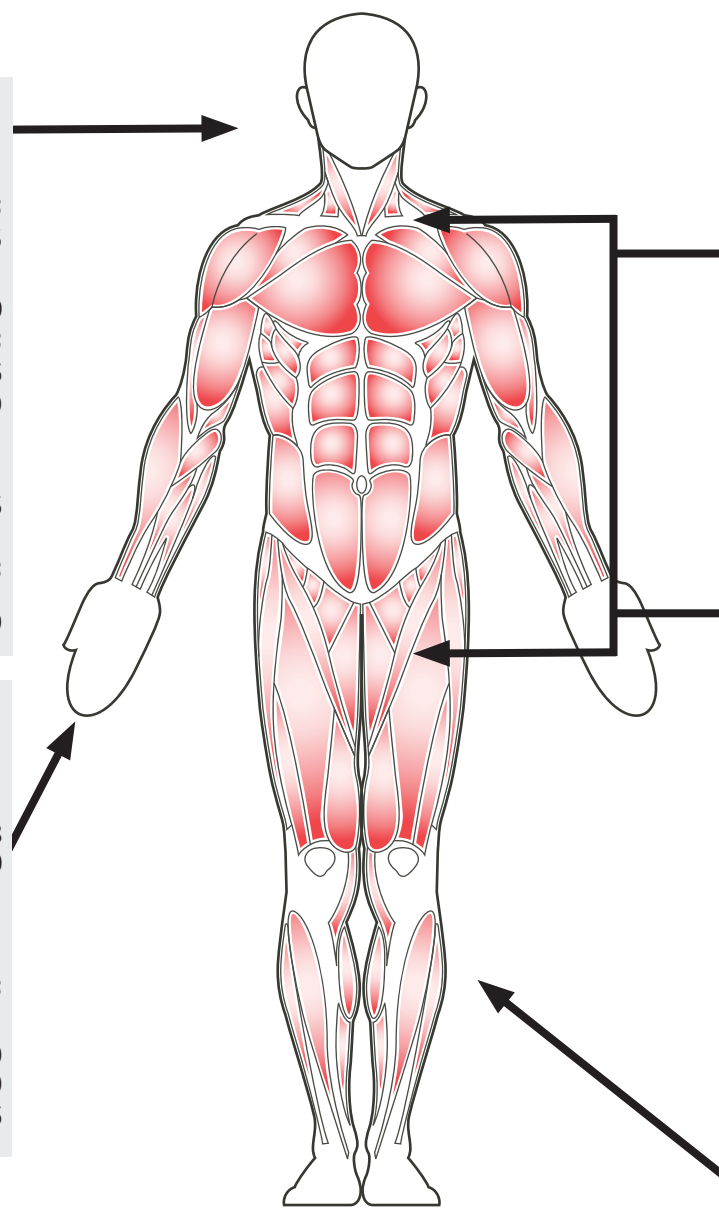
HEAD AND SOFT TISSUE NECK	
<b>BRAIN (PITUITARY, IACS)</b>	
(wo)	70551
(w/wo)	70553
MR Angio Head (w)	70545
<b>ORBITS / FACE / SOFT TISSUE NECK</b>	
(wo)	70540
(w/wo)	70543
TMJ (wo)	70336
MR Angio Neck (w/wo)	70549
<b>COMBINATION STUDIES</b>	
Brain MRI & MRA Head	
(w/wo) (w)	70553 & 70545
Brain & Orbits	
(w/wo)	70553 & 70543
MRA Head & MRA Neck	
	70545 & 70549

UPPER EXTREMITY	
<b>NON JOINT (HUMERUS, FOREARM, HAND OR FINGER)</b>	
(wo)	73218
(w/wo)	73220
<b>JOINT (SHOULDER, ELBOW OR WRIST)</b>	
(wo)	73221
(w/wo)	73223
<b>ARTHROGRAM</b>	
Shoulder (w)	73222, 77002 & 23350
Elbow (w)	73222, 73085 & 24220
Wrist (w)	73222, 73115 & 25246

SPINE	
<b>CERVICAL</b>	
(wo)	72141
(w/wo)	72156
<b>BRACHIAL PLEXUS</b>	
(wo)	73218
(w/wo)	73220
<b>THORACIC</b>	
(wo)	72146
(w/wo)	72157
<b>LUMBAR</b>	
(wo)	72148
(w/wo)	72158

BODY IMAGING	
<b>CHEST</b>	
(wo)	71550
(w/wo)	71552
MR Angio Chest (w/wo)	71555
<b>ABDOMEN</b>	
(wo)	74181
(w/wo)	74183
MR Angio Abdomen (w/wo)	74185
MRCP (w/wo)	74183 & 76376
MR Enterography	74183 & 72197
<b>PELVIS</b>	
(wo)	72195
(w)	72196
(w/wo)	72197
MR Angio Pelvis (w/wo)	72198
<b>BREAST, BILATERAL WITH CAD</b>	
(w/wo)	77049

LOWER EXTREMITY	
<b>NON JOINT (THIGH/FEMUR, CALF, TIB/FIB, FOOT OR TOE)</b>	
(wo)	73718
(w/wo)	73720
<b>JOINT (HIP, KNEE OR ANKLE)</b>	
(wo)	73721
(w/wo)	73723
<b>ARTHROGRAM</b>	
Hip (w)	73722, 73525, 27093
Knee (w)	73722, 73580, 27370
Ankle (w)	73722, 73615, 27648



**ABBREVIATION KEY**  
 wo = without IV contrast  
 w = with IV contrast  
 w/wo = with & without IV contrast

*These CPT codes represent the most commonly ordered MRI exams under ARA protocols. For any coding inquiry not listed, please call your Provider Relations Associate at (512) 731-2254.*

